

MidiPlay

A Windows program to play Midi files

<http://freespace.virgin.net/chris.crhills/midiplay/index.html>

MidiPlay is a free Windows program that allows singers and instrumentalists to play MIDI files and adjust the playback to help them to learn their parts. It shows the position in the score while it's playing the music.

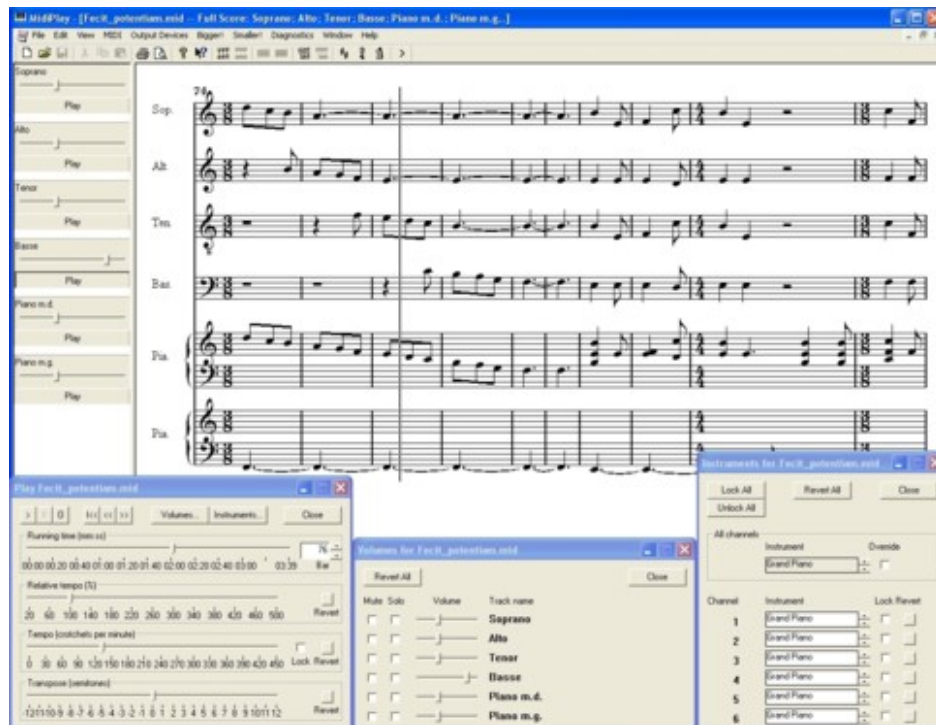
The instructions below tell you how to:

1. Download the MidiPlay program.
2. Use the MidiPlay program to listen to MIDI files.
3. Use the advanced features of the MidiPlay program to achieve special effects (this isn't essential to hearing the individual parts, but it makes the music sound better).
4. Send feedback to me.

1. To download the MidiPlay program:

- o Right click [here](#).
- o Then click on **Save Link As** or **Save Target As** in the popup menu to save the program on C:\ or somewhere else on your hard disk. Remember where you've saved it.


When MidiPlay is playing a MIDI file and you have [displayed the score](#), it should look something like this:







2. **Using the MidiPlay program to listen to MIDI files:**
 - Run the MidiPlay program from wherever you saved it on your hard disk (use Windows Explorer to open C:\ or wherever you saved MidiPlay, then double click on MidiPlay).
 - Open a MIDI file:
 - Click **File** on the menu bar and then click on **Open...** from the popup menu.
 - Find the directory where you saved your downloaded MIDI files (they'll be in C:\ or wherever you saved them).
 - Click on one of the MIDI files.
 - Click on **OK**.
 - You'll see a window containing the names of the parts in the file. Click on the **Play** button at the left of the line for your part. You should hear the piece being played through your loudspeakers or MIDI keyboard, with your part emphasised and the other parts playing quietly.
 - If you hear an echo effect, this is probably because you have more than one MIDI output device. Click on the || (**Pause**) button to stop. Then in the **Output Devices** menu click on **Select Output Device...** and choose one of your MIDI output devices from the drop down list. Then click on the > (**Play**) button to start again.
 - You can now just listen to the piece, or you can use the following buttons and controls:
 - Click on the << (**Skip backwards**) button to jump back a few seconds.
 - Click on the >> (**Skip forwards**) button to jump forward a few seconds.
 - Click on the |<< (**Back to start**) button to go back to the start.
 - Click and drag the **Running Time** slider (and click on the > (**Play**) button to start playing again).
 - Click on the up/down buttons to choose a bar number to start at (this requires the bar information in the MIDI file to be correct, it isn't always).
 - Click and drag the **Relative Tempo** slider to adjust the speed.
 - Click on the **Revert** button to revert to normal tempo.
 - Click on the || (**Pause**) button to stop.
 - Click on the > (**Play**) button to start again.
 - To listen to another piece:
 - Click on the **Close** buttons in any dialog boxes you have open.
 - In the **File** menu click on **Open...** to open another file, and then carry on as before.
3. **Using the advanced features of the MidiPlay program:**

To view the score:

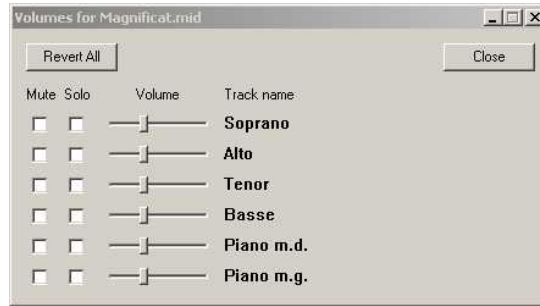
Note: The first time you select score viewing, you will be asked if you want to create a file – it is the 'font' containing the musical notation, so just click **OK** and carry on.

- If the MIDI file contains just the choir parts with piano accompaniment then click on the  button on the toolbar, or in the **Midi** menu click on **Full score (all tracks)**.

- If the MIDI file contains all the orchestral parts then you probably want to see just the choir parts (or whatever instruments you're interested in), so select them (by clicking on each one in turn), then click on the  button on the toolbar, or in the **Midi** menu click on **Full score (selected tracks)**.
- The other score buttons  and menu options display a short score or scores of the individual parts.
- If, when you click on one of the score buttons, a window opens but no music appears, then the music probably doesn't fit in the window. Try making the window bigger, or the music smaller (see next).
- The music in a score window can be made bigger or smaller by hitting **Alt-B** or **Alt-S** (multiple times if necessary).
- On the left side of the score window are volume controls for each track. Adjust the volume of each part by clicking and dragging its slider (as you make one part louder the others get quieter). Or just click on the Play button for your part to play the music with your part emphasised and the other parts playing quietly.
- The music in a score window can be printed - click on the  button on the toolbar, or in the **File** menu click on **Print...** **Alt-B** and **Alt-S** affect the size of the printed music as well as its appearance on the screen.
- To preview the printout, click on the  button on the toolbar, or in the **File** menu click on **Print Preview**.
- The score window displays a vertical dark line, showing the current position, while the music is playing. This can be toggled on and off in the **Midi** menu by clicking on **Follow score**.
- Note that the score display is not perfect. In particular it has to guess what accidentals to use (eg. is it a G-sharp or an A-flat?) and sometimes it makes the wrong choice.

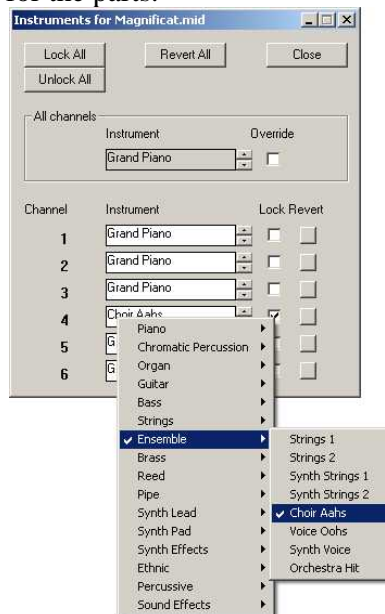
To change the volume of the various parts:

- If the Volumes dialog box is not already open then click on the **Volumes...** button to open it.
- In the Volumes dialog box (see below) you can use the following buttons and controls:
 - Check a **Solo** box to hear just that part. (Click on a box to toggle the check mark on or off.)
 - Check a **Mute** box to mute that part. (Click on a box to toggle the check mark on or off.)
 - Adjust the volume of each part by clicking and dragging its slider (as you make one part louder the others get quieter).
 - Click on the **Revert All** button to play all the parts at the normal volume.



To play some parts on different instruments:

- If the Instruments dialog box is not already open then click on the **Instruments...** button to open it.
- In the Instruments dialog box (see below) you can change the instrument for each channel by clicking on the instrument and choosing from the drop down menu, or by using the up/down buttons. This will check the **Lock** box for that channel to prevent the MIDI file from using its own instrument for that channel. Click on the **Revert** button to revert to the instrument settings in the MIDI file.
- You might prefer to hear all the parts on the piano. Just check the **All Channels - Override** box. Or you can use a different instrument by clicking on the **All Channels - Instrument** and choosing from the drop down menu, or by using the up/down buttons. Uncheck the **All Channels - Override** box to use the individual instruments for the parts.



To choose which MIDI output device to use:

- In the **Output Devices** menu click on **All Output Devices on** - this will open all your MIDI output devices.
- Or you can use a particular MIDI output device in the **Output Devices** menu by clicking on **Select Output Device...** and choosing one from the drop down list.

- Or you can use a combination of MIDI output devices by clicking on **Output Devices** on the menu bar, then clicking on individual output devices in the drop down menu to toggle them on or off.
- Note that if you have more than one MIDI output device turned on then you might hear an echo effect while the music is playing.

The Diagnostics menu options are not intended for normal use. **Diagnostics -> Logging** sends diagnostic output to a file called log.txt, and that wouldn't be terribly useful to you.

4. If you have any problems with the MidiPlay program or suggestions for improvement then email me at midi.play@yahoo.co.uk

Chris Hills